

NPDES highlights

March 23, 24 2017

Jim Pillsbury PE

Westmoreland Conservation District



[Permits](#) | [Applications](#) | [Fee Schedules](#) | [Plan Review Status](#)

- [Home](#)
- [Technical Services](#)
- [Conservation Education](#)
- [News](#)
- [Calendar](#)
- [Publications](#)
- [About Us](#)
- [Contact Us](#)
- [Open Records Req.](#)



IN THE FIELD

Lower Gets Quick Repairs

Westmoreland Conservation District



Search this site...

Browse: Home / Permits

Permits

NPDES PAG2 Permit

General Information Form required for Individual Permits and other DEP Department-wide permits.

ESCGP-2 Permit

Buffer Waiver

Chapter 105 Water Obstructions and Encroachment General Permits

Permits

- Applications
- Fee Schedules
 - Erosion & Sediment Fee Schedules
 - Forestry Fee Schedule
- Plan Review Status






Guest Login

Location: Home » Permit and Authorization Packages » Waterways Engineering and Wetlands » NPDES - National Pollutant Discharge Elimination S... » Stormwater Construction Activities » PAG-02 Stormwater Discharges Assoc with Constructi... Listing

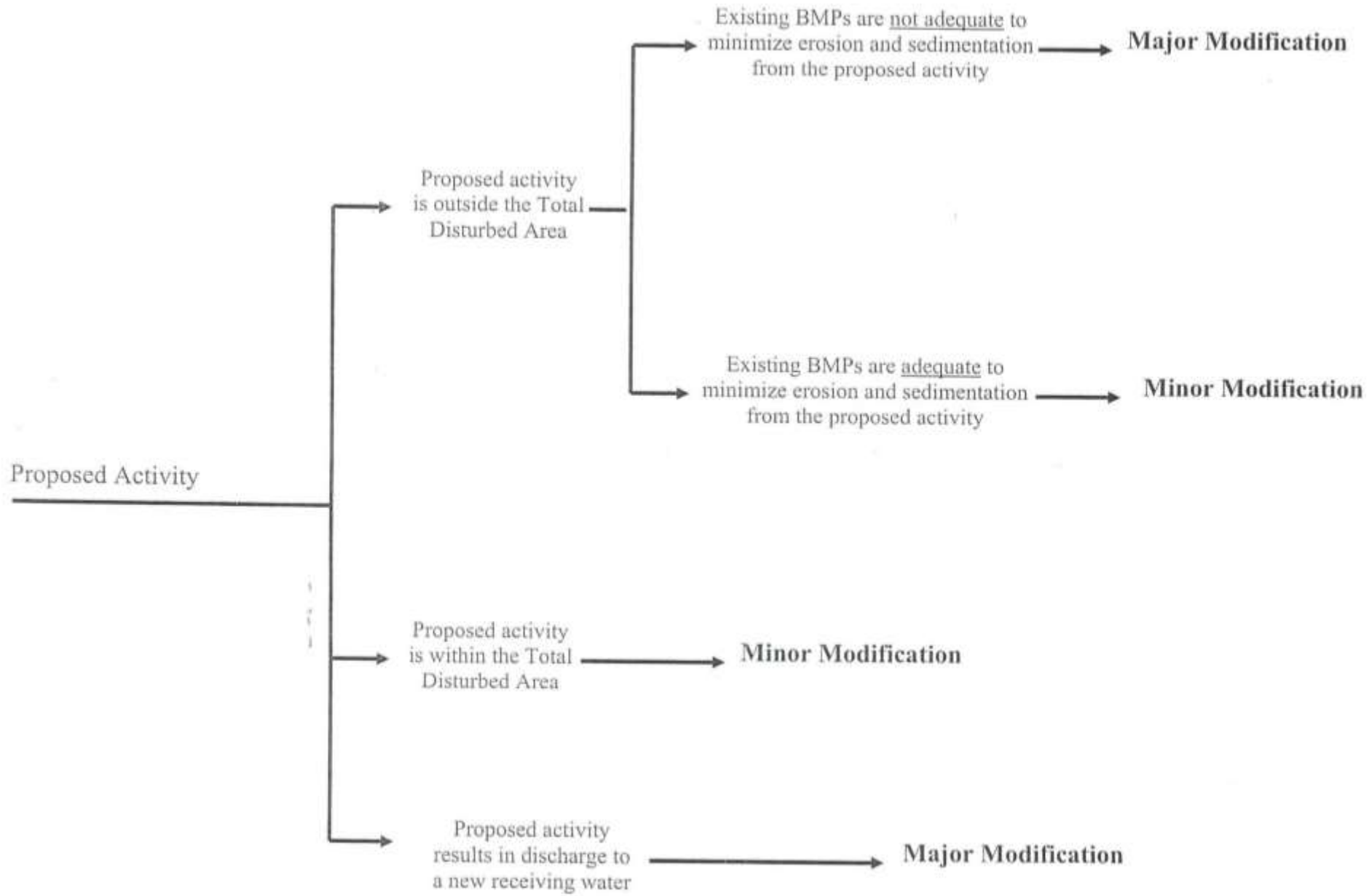
PAG-02 Stormwater Discharges Assoc with Construction Activities, NOI for Coverage under General or Individual Permit

3150-PM-BWEW0035

Properties

PLEASE NOTE: If you need to see details on the documents listed here such as effective or expiration dates, click on the Properties icon () on the right side of the page relative to the file name.

Type	Title	Edited	Size	Actions
	01 NOI Instructions.pdf 3150-PM-BWEW0035	09/07/16	554 KB	   
	02 NOI Form and Checklist.doc 3150-PM-BWEW0035	09/07/16	2 MB	   
	02 NOI Form and Checklist.pdf	09/07/16	891	   



2016

More DEP updates: Major or Minor Mod?

This slide is blank.

No, it's not.

Don't be picky!

I'm not being picky, I'm an engineer.

7. Riparian Buffers

- HQ or EV watersheds
- Be aware, some are hidden here & there in our county! Contact WCD for assistance
- Buffer requirements apply to intermittent and perennial streams
- Buffer requirements do not apply to ephemeral streams
- If you have an impact to a stream buffer, you need to either show equivalency or offsetting

Stream classification

- Perennial: A well-defined channel that contains water year-round in a year of normal rainfall... groundwater is the primary source of water... aquatic habitat... continuous presence & conveyance of water.
- Intermittent: A well-defined channel that contains water for only part of the year... flows during winter and spring when the seasonal water table is above the streambed... Some aquatic features... the flow may be heavily supplemented by stormwater runoff.
- Ephemeral: only carries stormwater ... not fed by the water table... lack of water-based characteristics.

Source: North Carolina Division of Water Quality



10/30/2009

Riparian buffers, continued

- The buffer is measured 150 feet from the stream's edge
- Activities in the 100 to 150 foot zone, require you to add Best Management Practices to replicate the function of the buffer which you have impacted.
- Use Worksheet 14, 15, and the checklist to demonstrate "BMP Equivalency"
- Activities closer than 100 feet from the streambank, require you to create another buffer somewhere else to offset the lost buffer.



NPDES permits...

- Please contact WCD staff if you have any questions
- We encourage pre-application meetings

NPDES permits...

are your friend

